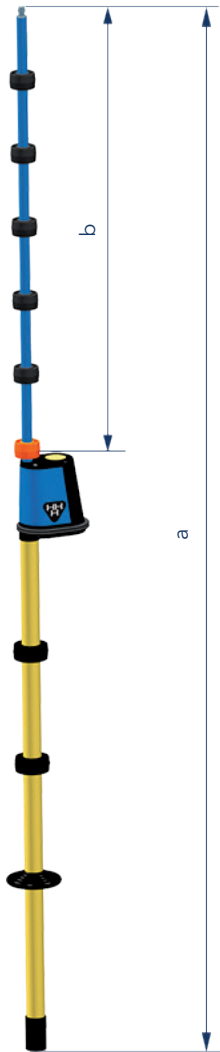


Compare 2.0

Phase comparator, single-pole



Compare 2.0 with indication unit

Product feature

- Designed according to IEC 61481 (VDE 0682-431)
- Single-pole, capacitive phase comparator
- Detection of correct phase relationship and incorrect phase relationship between two live conductors
- For indoor and outdoor applications 🏠 ☔
- Visual indication 👁️
- Built-in self-test function

The phase comparator Compare 2.0 is a single-pole, capacitive phase comparator for voltages from 5–36 kV. The device detects “correct phase relationship” or “incorrect phase relationship” conditions between two live conductors of a medium voltage distribution network.

Confirming to IEC 61481 Class B, “incorrect phase relationship” appears at a phase angle between 60° and 300°.

Four bright LEDs indicate various operational conditions.

The turning knob is used to select between three voltage ranges:

- 1: 5–10 kV
- 2: 10–20 kV
- 3: 20–36 kV

The phase comparison is realised by contacting the conductors one after the other.

In medium voltage networks with decentralised renewable energy feed-ins, measurement interruptions may occur. In such cases repeat the phase comparison. It is impossible to get a wrong indication.

According to the German accident prevention standard DGUV Regulation 3 (Table 1c), the device is subject to maintenance tests with minimum intervals of at least 6 years.

Technical data	Compare 2.0
Application	In dry and wet conditions, either indoors or outdoors
Indication	Visual: 1 white LED/1 blue LED / 1 green LED/ 1 red LED
Nominal frequency	50 Hz
Power supply	2 lithium cells, battery service life: 6 years based on 10 ready-to-operate cycles per day for a total of 230 work days per year
Operating class	B (indication of phase unbalance in the range of 60° – 300°)
Temperature range	–25 to +70 °C, climatic class N and W

Nominal voltage [kV]	Total length a [mm]	Insertion depth b [mm]	Order no.	Accessories
5–36	1,420	635	51-0104-001	Transportation bags

Accessories

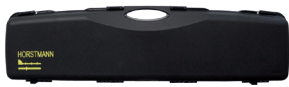
For voltage detectors, phase comparators and voltmeter

Transportation bag



For products	Dimensions [mm]		Order no.
	L	H	
FL-I, Comet BL-I/BL-A, Comet BK-I/BK-A, Compare 2.0	900	200	52-0104-101
TP-I, Comet BS-I/BS-A	1,080	220	52-0104-102

Universal plastic case



For products	Dimensions [mm]			Order no.
	L	H	D	
FL-I, TP-I, Comet series, Compare 2.0, PG II	1,030	240	100	52-0102-001
BL-M	1,030	240	100	52-0102-005

Extension rod

For extending the handle



For products	Length [mm]	Order no.
FL-I, Comet series, Compare 2.0, PG II, BL-M	500	52-0108-013
FL-I, Comet series, Compare 2.0, PG II, BL-M	1,000	52-0108-014

Probe tip

The probe tip provides improved penetration into oxide and paint layers.



For products	Order no.
FL-I, Comet series, Compare 2.0, PG II, BL-M	52-0306-002

Extension rod with contact electrode

For extending the insertion depth. It is not allowed to use the extension with contact electrode when it is wet.



For products	Length [mm]	Effective length [mm]	Order no.
Comet BK-I/BK-A (6–10 kV)	750	670	52-0106-016
Comet BK-I/BK-A (10–20 kV)	800	720	52-0106-017

Further extensions with contact electrode for specific installation on request

Double prong adapter

The double prong adapter provides improved handling of voltage detectors/voltmeters for contacting surfaces and holding the device.



	Dimensions [mm]	Order no.
To screw onto all voltage detectors and phase comparators	70	52-0307-001
To screw onto all voltage detectors and phase comparators	35	52-0307-003