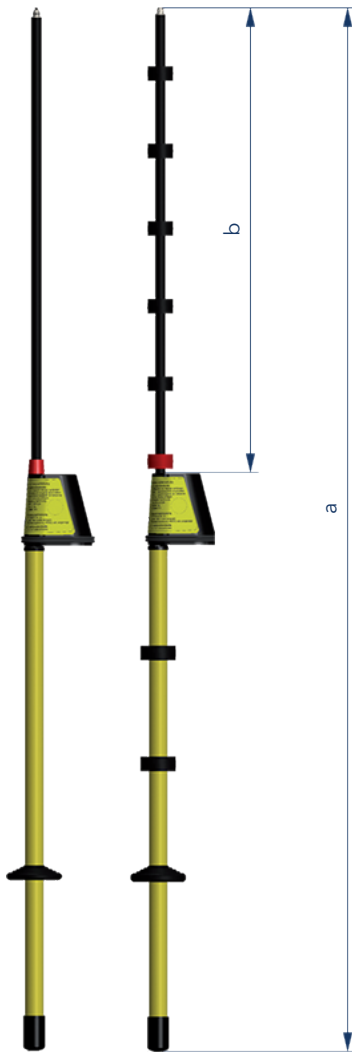


Comet BL-I | Comet BL-A

Voltage detector with self-test



Comet BL-I/BL-A with indication unit

Product feature

- Designed according to IEC 61243-1 (VDE 0682-411), Category S
- Comet BL-I: indoor type 🏠
- Comet BL-A: outdoor type 🏠 🌧️
- Voltage indication visual 👁️ or visual and audible 👁️ 🔊
- Built-in self-test

The Comet BL-I/BL-A devices are capacitive voltage detectors for testing the voltage on one pole. They are intended for the detection of operating voltages clearly indicating either the "voltage present" or "voltage not present" state.

The voltage detectors are provided with a built-in self-test facility which checks the function of the circuit including the contact electrode (comprehensive self-test function) before each use.

For transportation purposes, the insulating element can be removed from the display with the contact electrode.

According to the German accident prevention standard DGUV Regulation 3 (Table 1c), the device is subject to maintenance tests with minimum intervals of at least 6 years.

Technical data	Comet BL-I	Comet BL-A
Application	In dry conditions, normally indoors	In dry and wet conditions, either indoors or outdoors
Indication	<ul style="list-style-type: none"> ▪ Visual: 1 red LED/1 green LED ▪ Visual and audible: 1 red LED/1 green LED/1 buzzer 	
Nominal voltage	50 Hz (optional 60 Hz)	
Power supply	2 lithium cells, battery service life: 6 years based on 10 ready-to-operate cycles per day for a total of 230 work days per year	
Temperature range	-25 to +70 °C, climatic class N and W	

Nominal voltage [kV]	Total length a [mm]	Insertion depth b [mm]	Order no.			
			Comet BL-I 		Comet BL-A  	
						
5	1,270	462	50-0901-011	50-0903-008	50-1001-009	50-1003-009
10	1,270	462	50-0901-012	50-0903-009	50-1001-010	50-1003-010
20	1,420	612	50-0901-013	50-0903-010	50-1001-011	50-1003-011
6-10	1,420	612	50-0901-014	50-0903-011	50-1001-012	50-1003-012
10-20	1,570	762	50-0901-015	50-0903-012	50-1001-013	50-1003-013
20-30	1,570	762	50-0901-022	50-0903-018	50-1001-015	50-1003-018

Accessories

Extension rod

Probe tip

Extension with contact electrode

Double prong adapter

Transportation bags

Accessories

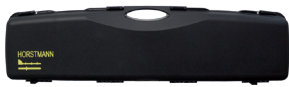
For voltage detectors, phase comparators and voltmeter

Transportation bag



For products	Dimensions [mm]		Order no.
	L	H	
FL-I, Comet BL-I/BL-A, Comet BK-I/BK-A, Compare 2.0	900	200	52-0104-101
TP-I, Comet BS-I/BS-A	1,080	220	52-0104-102

Universal plastic case



For products	Dimensions [mm]			Order no.
	L	H	D	
FL-I, TP-I, Comet series, Compare 2.0, PG II	1,030	240	100	52-0102-001
BL-M	1,030	240	100	52-0102-005

Extension rod

For extending the handle



For products	Length [mm]	Order no.
FL-I, Comet series, Compare 2.0, PG II, BL-M	500	52-0108-013
FL-I, Comet series, Compare 2.0, PG II, BL-M	1,000	52-0108-014

Probe tip

The probe tip provides improved penetration into oxide and paint layers.



For products	Order no.
FL-I, Comet series, Compare 2.0, PG II, BL-M	52-0306-002

Extension rod with contact electrode

For extending the insertion depth. It is not allowed to use the extension with contact electrode when it is wet.



For products	Length [mm]	Effective length [mm]	Order no.
Comet BK-I/BK-A (6–10 kV)	750	670	52-0106-016
Comet BK-I/BK-A (10–20 kV)	800	720	52-0106-017

Further extensions with contact electrode for specific installation on request

Double prong adapter

The double prong adapter provides improved handling of voltage detectors/voltmeters for contacting surfaces and holding the device.



	Dimensions [mm]	Order no.
To screw onto all voltage detectors and phase comparators	70	52-0307-001
To screw onto all voltage detectors and phase comparators	35	52-0307-003