

BL-M with indication unit



Bag set

Product feature

- 2-pole resistive voltmeter
- Designed for direct measurement of alternating voltages in medium voltage distribution networks of 0.01 – 19.99 kV/50 Hz
- Accuracy >99 %
- Application on medium voltage switchgears, transformers

The two-pole resistive BL-M type voltmeter is designed to precisely and directly measure phase-to-earth voltages in three-phase medium voltage distribution networks of 10–24 kV/50 Hz. Measured voltages are digitally displayed up to 19.99 kV. Thanks to its accurate measurement feature, the BL-M device can also be used for voltage calibration.

The device is designed and built in accordance with IEC 61243-2. It is intended for the use on switchgears, transformers and other medium voltage applications. This device can not be used as voltage detector according to EN 50110-1!

The structural design is based on the proven BL series voltage detectors which have been providing many years of reliable service. As with the predecessor model, the BL-M device offers the user easy and advantageous handling, dismantling and transportation capabilities.

A calibration and maintenance test is recommended on the basis of IEC 61243-2 in a cycle of 2 years.

Technical data	BL-M
Application	In dry conditions, normally indoors
Indication	Display
Nominal frequency	50 – 60 Hz (optional 16,7 Hz)
Measuring range	0.01 – 19.99 kV AC (RMS)
Resolution	0.01 kV
Measurement uncertainty	±1 %, ±1 digit
Power supply	Lithium cell
Duty cycle	10 min.
Total length (a)	2,340 mm
Insertion depth (b)	Approx. 570 mm
Earthing connection cable	Length: 3 m
Earthing terminal	Screw-type terminal
Temperature range	0 to +50 °C

Equipment set	Accessories
BL-M with connection cable and screw-type terminal, incl. universal plastic case, extension rod, test prod and double prong adapter Order no. V99-0000-124-001	Extension rod
BL-M with connection cable and screw-type terminal Order no. 99-0000-124	Probe tip
	Double prong adapter
	Transportation bags

Accessories

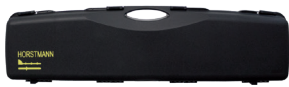
For voltage detectors, phase comparators and voltmeter

Transportation bag



For products	Dimensions [mm]		Order no.
	L	H	
FL-I, Comet BL-I/BL-A, Comet BK-I/BK-A, Compare 2.0	900	200	52-0104-101
TP-I, Comet BS-I/BS-A	1,080	220	52-0104-102

Universal plastic case



For products	Dimensions [mm]			Order no.
	L	H	D	
FL-I, TP-I, Comet series, Compare 2.0, PG II	1,030	240	100	52-0102-001
BL-M	1,030	240	100	52-0102-005

Extension rod

For extending the handle



For products	Length [mm]	Order no.
FL-I, Comet series, Compare 2.0, PG II, BL-M	500	52-0108-013
FL-I, Comet series, Compare 2.0, PG II, BL-M	1,000	52-0108-014

Probe tip

The probe tip provides improved penetration into oxide and paint layers.



For products	Order no.
FL-I, Comet series, Compare 2.0, PG II, BL-M	52-0306-002

Extension rod with contact electrode

For extending the insertion depth. It is not allowed to use the extension with contact electrode when it is wet.



For products	Length [mm]	Effective length [mm]	Order no.
Comet BK-I/BK-A (6–10 kV)	750	670	52-0106-016
Comet BK-I/BK-A (10–20 kV)	800	720	52-0106-017

Further extensions with contact electrode for specific installation on request

Double prong adapter

The double prong adapter provides improved handling of voltage detectors/voltmeters for contacting surfaces and holding the device.



	Dimensions [mm]	Order no.
To screw onto all voltage detectors and phase comparators	70	52-0307-001
To screw onto all voltage detectors and phase comparators	35	52-0307-003