

Earth connection bolts with ring groove for earthing terminal (see page 148)

Material: brass, tinned



Welding type

Fixing in switchgears [mm]	Rated values Ir [kA]/tr = 1 s	Order no.
-	18.7	63-0201-001



With steel pin

Fixing in switchgears [mm]	Rated values Ir [kA]/tr = 1 s	Order no.
M12 x 25	18.7	63-0201-007
M12 x 40	18.7	63-0201-006

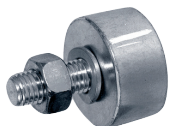


With female thread

Fixing in switchgears	Rated values Ir [kA]/tr = 1 s	Order no.
M12	18.7	63-0201-003

Earthing weld nut for cable lug with captive wing nut or with 13 mm diameter hole (see page 149)

Material: steel, zinc-plated



Connection point for earthing device [mm ²]	Rated values Ir [kA]/tr = 1 s	Order no.
M12 x 30	18.7	63-0204-001

Earthing screw for cable lug with captive wing nut (see page 149)

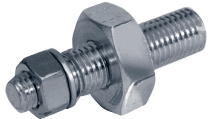
Material: brass, zinc-plated



Fixing point for earthing device [mm ²]	Spanner size	Rated values I _r [kA]/tr = 1 s	Order no.
M12 x 60	32	13.8	63-0205-001
M16 x 70	32	18.7	63-0205-002

Earthing screw adapter for cable lug with captive wing nut (see page 149)

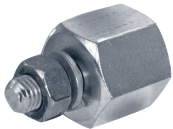
Material: brass, zinc-plated



Thread	Spanner size	Rated values I _r [kA]/tr = 1 s	Order no.
M12 to 16	32	9.9	63-0205-003

Earthing nut for cable lug with captive wing bolt (see page 149)

Material: brass, zinc-plated

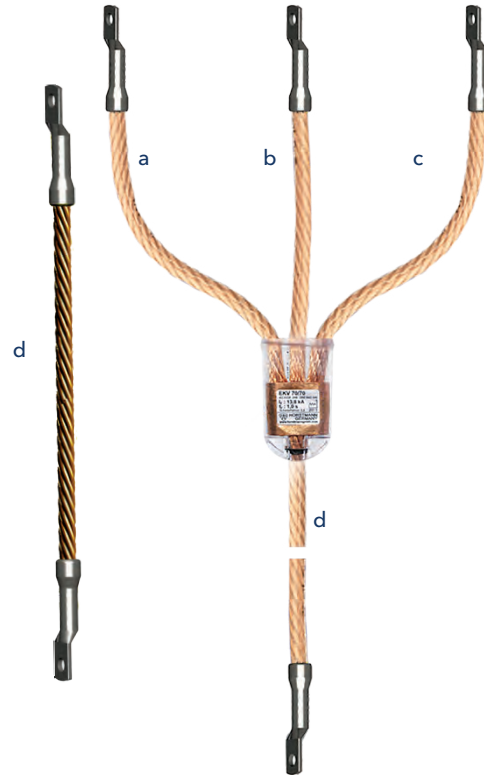


Female thread	Bolt thread [mm]	Spanner size	Rated values I _r [kA]/tr = 1 s	Order no.
M12	M12 x 25	32	9.9	63-0206-001
M12	M16 x 30	32	9.9	63-0206-003
M16	M12 x 25	32	9.9	63-0206-002

Order | inquiry

Earthing and short-circuiting devices

Order no.		Inquiry no	
Short-circuit cable (a/b/c)			
Cable cross section (mm ²):			
Length a:			
Length b:			
Length c:			
Mounting phase cable:			
Earthing cable (d)			
Cable cross section (mm ²):			
Length d:			
Mounting earth cable:			
Quantity:			
Date of delivery:			



Lengths of earthing and short-circuit cables have to fit to the switchgear and the distances between the connection points (min 1.2 times of the distance). If the cables are too long (> 1.5 times of the distance) they must be fixed with an insulating cable to prevent damages and injuries in case of a short-circuit.

Company	
Contact person	
Department	
Street	
Postcode/City	
Stamp/Date/Signature	Phone/Fax

An order is made exclusively by the terms and conditions of Dipl.-Ing. H. Horstmann GmbH.